

MONTGOMERY COUNTY, OHIO

2001 BUDGET IN BRIEF

[Did You Know? \(Facts about Montgomery County Departments\)](#)

[Montgomery County Statistics](#)

[Responsibilities of Elected Officials](#)

[Budgets by Department](#)

[Budgets by Service Area](#)

[Budgets by Category](#)

[Where does the money come from?](#)

[Issues and Initiatives](#)

[Montgomery County Organizational Chart](#)

[Montgomery County Elected Officials](#)

MONTGOMERY COUNTY - 2001 BUDGET IN BRIEF

DID YOU KNOW...

Services 559,062 county residents.

Maintains in excess of a \$1,000,000,000 infrastructure.

Maintains over 600 acres of park land.

Provides sewer treatment services on 7.3 billion gallons of influent and provides water to 81,079 customers.

Sanitary Engineering operates and maintains 1,141 miles of water mains, 10 water pumping stations, 13 water storage facilities, 1,163 miles of sanitary sewer mains and 33 sewage pumping stations.

Administers Human Services Levy funding totaling \$79.5 million.

Provides assisted living care for up to 65 Country View Manor residents.

Provides active treatment for up to 98 mentally retarded or developmentally disabled persons at Stillwater Center.

Performs over 22,043 building and electrical inspections annually and issues over 9,910 building and electrical permits.

Serves over 195,948 audience members at Memorial Hall and over 1,389,000 patrons at Courthouse Square.

Processes and distributes \$633 million in tax receipts through the Auditor's office.

Records real estate mortgages representing over \$6.5 billion in loans.

"Books" more than 35,633 persons into the county jail facilities.

Through video arraignment over 9,500 jail inmates make court appearances without ever leaving the jail.

Issues more than 4,000 marriage licenses through the Probate Court.

Provides direct mental health treatment services to more than 11,000 persons through the A.D.A.M.H.S. Agency.

MONTGOMERY COUNTY - 2001 BUDGET IN BRIEF

DID YOU KNOW (Continued) ...

Children Services Board serves 6,300 families.

Has approximately 371,790 registered voters.

Administers Ohio Works First, Food Stamps and Medicaid programs serving over 50,000 clients.

Has answered over 700,000 requests for information from the County Records Center over the past nineteen years.

Manages the disposal of over 430,000 tons of solid waste.

Administers a variety of programs designed to promote a reduce, reuse and recycling ethic, and to increase environmental awareness. Over 12,000 volunteers participate in the Keep Ohio Beautiful Program.

The Montgomery County Materials Reuse Facility (MCMRF) redirected over 620,000 pounds of reusable items from landfill waste to valuable use in non-profit organizations.

Since its creation the ED/GE program has assisted in the creation and retention of 23,914 jobs and leveraged approximately \$1,568,184,637 in public and private funds.

Processes over 258,803 documents in Auto Title through the Clerk of Courts.

Out of the 3,500 deaths reported to the Coroner's Office over 1,000 result in complete forensic post mortem examinations.

Manages 155 billion online records in the County Data Center.

Provides 8,133 hours of community service through the MonDay Correctional facility.

(Unless otherwise noted, statistics refer to annual activity.)

MONTGOMERY COUNTY - 2001 BUDGET IN BRIEF

MONTGOMERY COUNTY, OHIO

Montgomery County is the fourth most populated county in Ohio. Located in the southwest portion of the state, the county is easily accessible both by land and air. This location makes Montgomery County the tenth largest ninety-minute market in the country. Dayton is the Montgomery County seat and central city of the Miami Valley region.

As the birthplace of aviation, the area has a long tradition of innovation and free enterprise. It has been a leader in manufacturing production and is now on the forefront of new high technology industries.

Montgomery County contains a diverse mixture of urban and rural areas and serves 19 municipalities (incorporated cities or villages), 9 townships, 16 school districts and 6 county-wide special districts which are made up of the Park District, Sinclair Community College, the Miami Conservancy District, the Combined Health District, the Arts & Cultural District and the Dayton/Montgomery County Port Authority. The chart below briefly summarizes some statistics for the seven most populous counties in Ohio, as well as three of Montgomery County's neighboring counties.

County	1998 Estimated Population	1997 Per Capita Income	1990 Housing Units Occupied	Land Area (Sq. Miles)	County Seat
Clark	144,742	\$ 22,042	55,198	400	Springfield
Cuyahoga	1,393,978	29,008	563,243	458	Cleveland
Franklin	1,068,978	26,647	378,723	540	Columbus
Greene	147,886	23,653	48,351	415	Xenia
Hamilton	845,303	29,640	338,881	407	Cincinnati
Lucas	455,054	24,630	177,500	340	Toledo
Miami	98,868	24,118	34,559	407	Troy
Montgomery	559,062	26,056	266,192	462	Dayton
Stark	378,098	22,984	139,573	576	Canton
Summit	542,899	25,794	199,998	413	Akron

(Source: Montgomery County Planning Commission)

MONTGOMERY COUNTY - 2001 BUDGET IN BRIEF

QUESTIONS AND ANSWERS

This pamphlet outlines Montgomery County's financial and management plan for the year 2001. It is designed along the lines of the most commonly asked questions about county organization and finances, with a look at the 2001 budget, forecasts for revenue collections, and the plan for the efficient use of resources. The following information will introduce you to Montgomery County government, explain the responsibilities of the various officeholders, and summarize the annual operations of the county that affect our community as well as the entire Miami Valley area.

HOW IS COUNTY GOVERNMENT ORGANIZED?

Montgomery County is organized under the "commission" form of government with three county commissioners sharing responsibilities with eight separately elected officials and twenty-six elected judges.

WHAT ARE THE RESPONSIBILITIES OF THE COUNTY'S ELECTED OFFICIALS?

Auditor - verifies and processes all payments and revenues of the county; appraises real estate for property tax purposes; processes, certifies and distributes taxes; processes various licenses, e.g. dog licenses; inspects gas pumps and other standard weighing instruments.

Board of County Commissioners - serves as the general administrative body of county government, approves the annual county budget, authorizes payment of all county expenses and appoints members of various boards and commissions, e.g. Children Services Board.

Clerk of Courts - is the custodian of legal records processed by the General and the Domestic Relations divisions of the Montgomery County Common Pleas Court as well as the Second District Court of Appeals. In addition, the Clerk is responsible for issuing and maintaining all automobile titles in Montgomery County.

Coroner - investigates deaths caused by accidents, homicides, suicides, or when death is sudden or unexplained. This office operates the multi-jurisdictional Forensic Crime Lab which analyzes physical evidence such as fingerprints collected from crime scenes.

County Court - services the areas of the county that are not the responsibility of the Municipal (City) Courts; hears all adult traffic and misdemeanor cases occurring in the jurisdiction; hears motions on felony cases and holds preliminary hearings.

MONTGOMERY COUNTY - 2001 BUDGET IN BRIEF

RESPONSIBILITIES OF ELECTED OFFICIALS (Continued)

Court of Common Pleas - includes the following four divisions:

Domestic Relations Division - hears divorce, dissolution, legal separation, and annulment cases, as well as civil domestic violence cases for residents of Montgomery County. In addition, the court maintains jurisdiction in such matters as spousal and child support, child custody, visitation and other related matters.

General Division - serves as the court in civil cases involving claims over \$500 and in criminal cases involving felonies committed in Montgomery County; supervises probationers and hears appeals of lower court decisions and decisions of the Board of County Commissioners.

Juvenile Division - has jurisdiction over those under 18 years of age who are traffic offenders, delinquent, neglected or unruly; decides paternity, custody, and support cases which are not the responsibility of the Domestic Relations Division.

Probate Division - has the legal authority to certify and uphold wills and estates; grants adoptions, guardianships, marriage licenses and name changes; and determines commitments to mental institutions.

Engineer - maintains roads, bridges, ditches and traffic signals throughout the county and reviews engineering plans for new private developments.

Prosecutor - serves as the legal advisor to all county officials; tries all criminal cases in the county punishable by a year or longer in prison; provides information and referral services to victims of violent crimes; establishes paternity and child support orders; and investigates criminal welfare fraud cases.

Recorder - maintains an official copy of all deeds, mortgages, powers of attorney and transfers of land and buildings lying within the county.

Second District Court of Appeals - one of twelve such courts in Ohio, the Court of Appeals has jurisdiction in six counties: Clark, Champaign, Darke, Greene, Miami and Montgomery; hears appeals of cases from the Common Pleas Court, County Courts and Municipal Courts.

MONTGOMERY COUNTY - 2001 BUDGET IN BRIEF

RESPONSIBILITIES OF ELECTED OFFICIALS (Continued)

Sheriff - serves as the police department for residents of areas not served primarily by a city or township police department, operates the county jail, the 800 MHz radio system and is the "911" dispatch service for various townships and villages which do not have their own 911 service.

Treasurer - collects property taxes, manages the county's bank accounts, and serves as the county's investment officer.

MONTGOMERY COUNTY - 2001 BUDGET IN BRIEF

HOW DOES THE COUNTY SPEND ITS ANNUAL BUDGET?

Montgomery County provides a wide variety of services including law enforcement, judicial activities, social services, parks, recreation facilities, water and sewer services. To be sure that money is designated and spent for a particular purpose, the county budget is separated into various "funds". The General Fund, for example, is used to account for resources that can be spent in any way the county deems appropriate. It also serves as one of the primary indicators of financial health for the entire county. The General Fund budget for 2001 is \$150.4 million. A Special Revenue Fund is a fund that is restricted in the sense that it contains money that must be spent for a designated purpose, such as grant funds received for the Community Development Block Grant Program. The other types of county funds are Enterprise, Internal Service, Debt Service, Special Assessment, and Capital.

There are several ways in which one can look at how the county will spend its budget in 2001. In the next section, we will explain these three areas and show the breakdown of expenses by each area.

(1) BY DEPARTMENT

A department is an entity which has a unique purpose or function, such as the Data Processing Department which serves the computer needs of the county, or the Public Works Department which provides building maintenance and janitorial service to most county owned buildings; as well as waste disposal services.

Some departments have several divisions or "sub-departments" within them. For example, Administrative Services is made up of the Animal Shelter, Risk Management, Organizational Development and Training, Personnel, Purchasing, Central Services and Communications. Juvenile Court operates the Juvenile Detention Center and a Residential Treatment Facility which house juvenile offenders.

"Non-Departmental" refers to line-items in the General Fund budget which are not under the control of a particular department or elected official. These funds are managed by the Office of Management and Budget and are used to provide funding for certain assessments (e.g. state auditor charges) and shared costs such as property and liability insurance. The following listing shows the departments within the county, the 2001 budget for each, and the number of people (positions) within that department.

MONTGOMERY COUNTY - 2001 BUDGET IN BRIEF
BUDGET SUMMARY BY DEPARTMENT

County Department	2001 Adopted Budget	2001 Budgeted Positions
A.D.A.M.H.S. Board	\$47,971,486	34
Administrative Services	16,715,066	90
Auditor	9,262,493	94
Board of County Commissioners	720,434	9
Board of Elections	2,651,436	34
Board of Mental Retardation and Developmental Disabilities	37,582,520	672
Children Services Board	49,055,648	376
Clerk of Courts	6,651,353	136
Clerk of the Commission	107,115	1
Common Pleas Court	12,006,330	233
Community & Economic Development	11,017,725	51
Coroner	3,302,767	36
County Administrator	236,697	2
County Courts	976,843	19
Court of Appeals	180,829	1
Crime Laboratory	2,134,686	25
Data Processing Board	3,380,378	33
Debt Service Funds	22,950,959	-
Domestic Relations Court	3,270,315	58
Engineer	18,701,264	121
Family and Children First Council	102,045,589	12
Job and Family Services	89,638,330	439
Job Center	3,608,659	2
Juvenile Court	22,914,570	392
Monday Program	4,273,890	83
Multi-Service Centers	900,469	11
Municipal Courts	1,013,752	-
Non-Departmental	49,293,467	10
Office of Management and Budget	917,441	10
Probate Court	1,715,587	31
Prosecutor	11,733,444	202
Public Defender Commission	4,464,086	74
Public Works	38,245,807	227
Recorder	1,359,787	24
Records Center & Archives	888,347	23
Sanitary Engineering	67,612,117	239
Sheriff	32,375,711	457
Soil & Water Conservation	461,139	10
Special Assessment Funds	290,769	-
Stillwater Center	12,415,524	244
Treasurer	1,747,122	22
Veteran Services	1,631,047	15
TOTAL OPERATING BUDGET	\$698,422,998	4,551

* This total figure reflects the county's operating budget. Position totals do not include seasonal special, intermittent or those positions budgeted in capital projects.

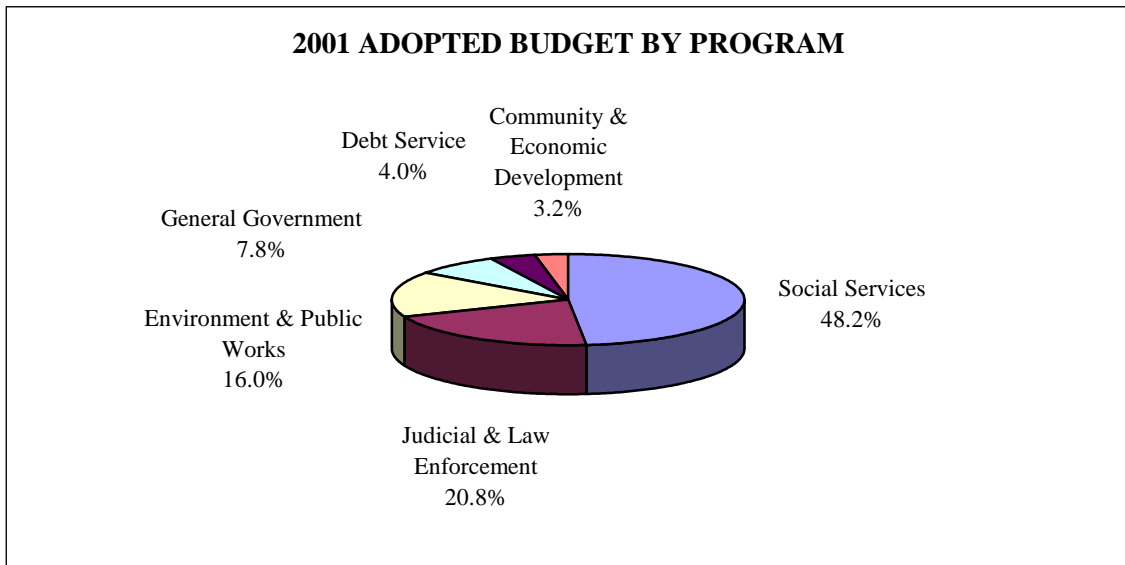
MONTGOMERY COUNTY - 2001 BUDGET IN BRIEF
HOW DOES THE COUNTY SPEND ITS ANNUAL BUDGET? (Continued)

(2) BY PROGRAM AREA

The county's departments may also be organized by a program area that is made up of departments and/or divisions that are combined to present a budget that serves a particular purpose. The county's budget can be divided into six such areas:

- (1) Social Services
- (2) Judicial and Law Enforcement
- (3) Environment and Public Works
- (4) General Government
- (5) Debt Service
- (6) Community and Economic Development

The chart below shows how much money is spent by each area followed by a brief description of each.



MONTGOMERY COUNTY - 2001 BUDGET IN BRIEF
2001 ADOPTED BUDGET BY PROGRAM AREA

Social Services	\$336,982,159
Judicial and Law Enforcement	145,028,445
Environment and Public Works	111,648,720
General Government	54,273,180
Debt Service	28,225,069
Community and Economic Development	22,265,425
Total Budget	\$698,422,998

Social Services (48.2%) includes agencies such as Job and Family Services, Job Center, Children Services Board, Alcohol, Drug Addiction and Mental Health Services Board, Board of Mental Retardation and Developmental Disabilities, Family & Children First Council, Human Services Levies and the Stillwater Center. These agencies provide a wide array of services ranging from food stamp administration to job training and treatment of mentally and physically disabled persons.

Judicial and Law Enforcement agencies (20.8%) provide for the needs of the civil and criminal justice systems, security for county employees and clients through the various courts, the Coroner/Crime Lab, Sheriff, Prosecutor, Public Defender, Clerk of Courts and the Support Enforcement Agency.

Environment and Public Works (16.0%) includes such departments as the County Engineer, Sanitary Engineering and Public Works (Solid Waste). These agencies provide services that maintain roads and bridges, protect the environment and provide water, sewer and waste disposal services.

General Government (7.8%) agencies provide for the daily operation of county government through the offices of the Board of County Commissioners, Auditor, Treasurer, Recorder, Board of Elections and several others.

Debt Service (4.0%) represents the county's vehicle for providing funding for construction, renovation and other improvements to county infrastructure. Although it has been identified as a service area, Debt Service functions more as an expenditure category rather than a specific service area such as those presented above. Also included in debt funded projects are the costs of servicing debt for various major improvements to the water, sewer, and solid waste systems.

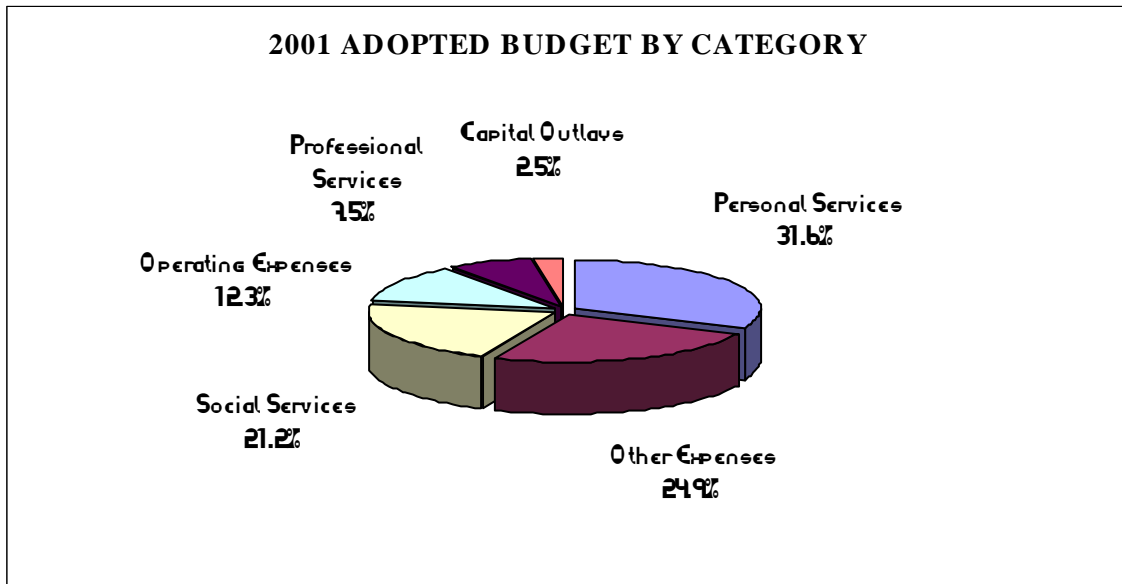
**MONTGOMERY COUNTY - 2001 BUDGET IN BRIEF
BY PROGRAM AREA (Continued)**

Community and Economic Development (3.2%) includes the following departments and programs: Building Regulations; Planning Commission; Cultural Facilities; Community Development Block Grant; ED/GE Program; Arts & Cultural District Contribution; Affordable Housing Initiatives; County Parks and others. These programs maintain and improve our community, stimulate economic development through the promotion of regional growth, and enhance amenities within the county.

HOW DOES THE COUNTY SPEND ITS ANNUAL BUDGET? (Continued)

(3) BY CATEGORY

Finally, the budget may be explained in terms of dollars spent by category, such as Personal Services or Operating Expenses, regardless of the department or service area. The following chart shows expenses by category as defined in the narrative.



**MONTGOMERY COUNTY - 2001 BUDGET IN BRIEF
HOW DOES THE COUNTY SPEND ITS ANNUAL BUDGET? (Continued)**

(3) BY CATEGORY

2001 ADOPTED BUDGET BY CATEGORY

Personal Services	\$ 220,296,879
Other Expenses	174,184,310
Social Services	148,201,843
Operating Expenses	85,931,580
Professional Services	52,657,982
Capital Outlays	17,150,404
Total Budget	\$698,422,998

Personal Services (31.6%) are made up of wages, including overtime and fringe benefits.

Other Expenses (24.9%) includes payments made for subsidies to county and external agencies, intergovernmental agreements, interfund transfers and payments for bonds and notes.

Social Services (21.2%) includes various types of social service payments, foster home costs, adoption costs, client services and Soldier's Relief Allowance.

Operating Expenses (12.3%) are the day-to-day expenses needed to run the various departments such as office supplies, rent and utility costs.

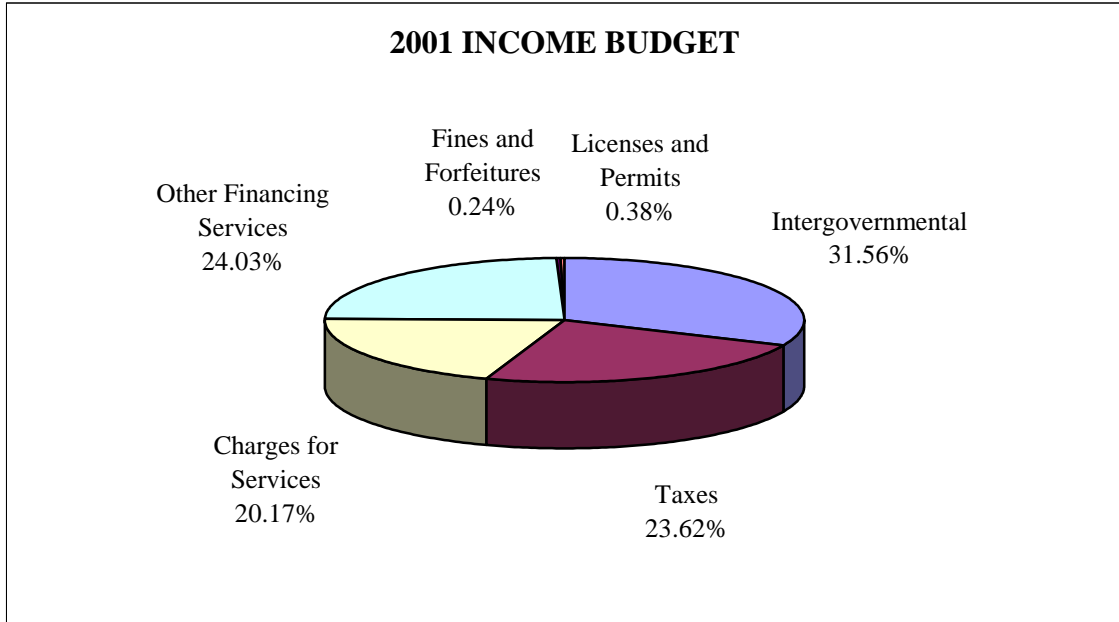
Professional Services (7.5%) are used to pay for medical, legal, data processing, auditing, engineering, law enforcement services, maintenance and repair services, communication services, insurance, board and care of prisoners and other professional service costs.

Capital Outlays (2.5%) are the expenses for capital projects, construction and improvements and operating equipment.

MONTGOMERY COUNTY - 2001 BUDGET IN BRIEF

WHERE DOES THE MONEY COME FROM TO PAY FOR THESE EXPENSES?

The chart below shows the \$683.3 million in revenues estimated for the county in 2001. An explanation of each type of revenue is also included.



2001 INCOME BUDGET

Intergovernmental	\$ 215,659,930
Taxes	161,398,686
Charges for Services	137,793,896
Other Financing Sources	164,154,418
Licenses and Permits	2,574,226
Fines and Forfeitures	1,671,913
Total Income Budget	\$683,253,069

MONTGOMERY COUNTY - 2001 BUDGET IN BRIEF

WHERE DOES THE MONEY COME FROM? (Continued)

Intergovernmental (31.56%) are the revenues received from state and federal grant programs to support welfare, housing, job training, community development, child support, and various other activities.

Taxes (23.62%) are revenues received based on holdings of property and the purchase of goods. The largest source of taxes for the county are property taxes followed by sales and motor vehicle license taxes.

Charges for Services (20.17%) are fees charged by county departments and agencies for various user services with water, sewer and solid waste charges accounting for the majority of this category.

Other Financing Sources (24.03%) includes rental on county property, donations, special assessments, interest income, various reimbursements and commissions, proceeds of debt sales, miscellaneous revenues, insurance claims and funds transferred between county entities.

Licenses and Permits (.38%) are the revenues generated from the sale of business (vendor's) licenses, dog licenses and building permits.

Fines and Forfeitures (.24%) are revenues derived from penalties, such as traffic fines and court costs, assigned by the various courts in the county.

MONTGOMERY COUNTY - 2001 BUDGET IN BRIEF

HOW YOUR PROPERTY TAXES ARE CALCULATED



Appraised Value = Estimated worth of your home
Assessed Value = 35% of the Appraised Value
One Mill = \$1.00 per every \$1,000 of Assessed Value
Tax Rate =

The total millage in the county varies from 61.77 to 125.55 mills, depending on the city, township, or school district in which you live. Of the total, Montgomery County receives 12.94 mills (excludes 1.80 mills for the county wide park district and 2.50 mills for the community college).

SALES TAX

The sales tax rate in Montgomery County is 6.5%. Of this amount, 5% goes to the State of Ohio and 1% goes toward the operation of the county, and .5% to the Miami Valley Regional Transit Authority (MVRTA).

MONTGOMERY COUNTY - 2001 BUDGET IN BRIEF

ISSUES AND INITIATIVES

Maintain financial stability and continue effective service delivery to the citizens of Montgomery County through the 2000-2009 Ten Year General Fund Plan.

Community and Economic Development

Provide continued leadership within the community on a variety of regional issues and development projects such as RiverScape and the Schuster Performing Arts Center.

Continued financial support for the Dayton Regional Economic Development Alliance through the creation of regional marketing plans and initiatives.

Continue to improve intergovernmental cooperation and provide the county with a competitive advantage in attracting new and retaining existing business through the ED/GE program, linked deposit and the retention and expansion program.

Work closely with the newly created Dayton/Montgomery County Port Authority to enhance economic development in Montgomery County.

Continue to support the new construction of a interchange on I-75 in southern Montgomery County located around Austin Road in order to ensure continued growth within the county.

Human Services and Workforce Development

Continue to strengthen the workforce of Montgomery County by coordinating a cohesive system of education, training, economic development, health and human services, and the public and private sectors.

Continue to promote self-sufficiency and economic independence through the Job Center. The Job Center offers employment opportunities, work training, unemployment insurance benefits, public assistance and other supportive services.

Assist in developing innovative approaches to address the issue of out of school youth through the recommendations of the Out of School Youth Task Force.

MONTGOMERY COUNTY - 2001 BUDGET IN BRIEF

ISSUES AND INITIATIVES (Continued)

Law Enforcement and Justice

Continue to develop effective responses to state and federal mandates in such areas as local responsibility for low level felony offenders, sex offender registration, and domestic and child abuse.

Continue to support public safety through the effective use of jail beds and through providing alternatives to incarceration such as pretrial release and supervision for appropriate offenders to ensure court appearance.

Enhance alternative sentencing programs, such as the prisoner work program, which allows inmates to repay society through community clean-up and improvement projects.

Continue the success of the Juvenile Court Intervention Center to ensure a better and more immediate impact on juvenile offenders.

General Government

Plan for the construction of a new juvenile detention center; the county animal shelter; and the continued construction of facilities for Stillwater Center and Sanitary Engineering.

Continue to enhance the presence of Montgomery County on the internet through the implementation of the E-Government Task Force.

Continued review of the Historic Courthouse renovation and the reuse of the Memorial Hall facility.

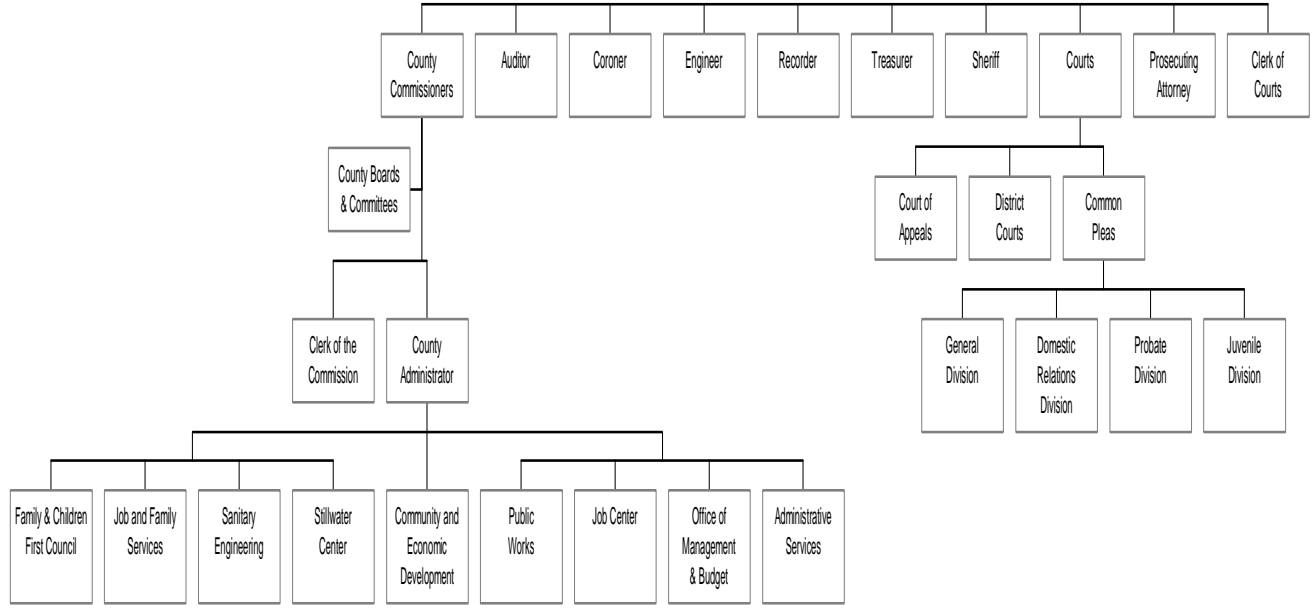
Environment & Public Works

Assure the most cost-effective delivery of water and sewer services, through a competitive assessment currently underway, an equitable rate structure and by developing more cost-effective sources of water.

Continue improving our recycling and reuse efforts through programs such as Household Hazardous Waste Disposal and MCMRF, the Montgomery County Materials Reuse Facility.

MONTGOMERY COUNTY - 2001 BUDGET IN BRIEF

CITIZENS OF MONTGOMERY COUNTY



MONTGOMERY COUNTY - 2001 BUDGET IN BRIEF

MONTGOMERY COUNTY OFFICIALS

Board of County Commissioners:

Charles J. Curran	Commissioner	225-4912
Don Lucas	Commissioner	225-4015
Vicki D. Pegg	President	225-6470

Other Elected Officials:

Karl L. Keith	Auditor	225-6024
Dan Foley	Clerk of Courts	225-6118
James H. Davis, M.D.	Coroner	225-4156
Joseph Litvin	Engineer	225-4888
Mathias H. Heck, Jr.	Prosecutor	225-5599
Judy Dodge	Recorder	225-4275
Dave Vore	Sheriff	225-4192
Hugh M. Quill	Treasurer	496-7752

Second District Court of Appeals:

Honorable James A. Brogan	Judge	225-4464
Honorable Mike Fain	Judge	225-4464
Honorable Thomas J. Grady	Judge	225-4464
Honorable William H. Wolff, Jr.	Presiding Judge	225-4464
Honorable Frederick N. Young	Judge	225-4464

Common Pleas Court:

Honorable John W. Kessler	Presiding Judge	225-4384
---------------------------	-----------------	----------

General Division

Honorable Mary E. Donovan	Judge	225-4376
Honorable Jeffrey E. Froelich	Administrative Judge	225-4440
Honorable Michael Hall	Judge	496-7951
Honorable Barbara P. Gorman	Judge	225-4392
Honorable David A. Gowdown	Judge	225-4416
Honorable John W. Kessler	Presiding Judge	225-4384
Honorable Dennis J. Langer	Judge	225-4055
Honorable John P. Petzold	Judge	496-7955
Honorable David G. Sunderland	Judge	225-4368
Honorable Michael L. Tucker	Judge	225-4448
Honorable A.J. Wagner	Judge	225-4409

MONTGOMERY COUNTY - 2001 BUDGET IN BRIEF
MONTGOMERY COUNTY OFFICIALS (Continued)

Common Pleas Court (Continued):

Domestic Relations Division

Honorable Denise L. Cross	Administrative Judge	496-7538
Honorable Judith A. King	Judge	496-7536

Juvenile Division

Honorable Nick Kuntz	Judge	225-4124
Honorable Michael B. Murphy	Administrative Judge	225-4780

Probate Court

Honorable George J. Gounaris	Administrative Judge	225-4400
------------------------------	----------------------	----------

County Court Area 1:

Honorable James A. Hensley, Sr.	Judge	687-9099
Honorable James L. Manning	Judge	687-9099
Honorable Connie S. Price	Administrative Judge	687-9099

County Court Area 2:

Honorable James A. Hensley, Jr.	Judge	496-7231
Honorable James D. Piergies	Judge	496-7231

County Administrator:

Deborah A. Feldman	Administrator	225-4693
--------------------	---------------	----------